

Introducing Annual Benefit Statements

This year we are introducing a new initiative for NHS Pension Scheme members – Annual Benefit Statements (ABS).

Statements are now available to view online via the Total Reward Statement (TRS) portal.

You will only receive a statement if you were a member of the NHS Pension Scheme on or before 31 March 2014.

Further information about how to access your statement is available on the TRS information website www.nhsbsa.nhs.uk/TRS.aspx

What is an Annual Benefit Statement?

Your ABS is a personalised summary of your NHS Pension benefits. Your statement will be updated and refreshed on the TRS portal each year. We advise you to print or save a copy of each statement once you have viewed it.

Typically the following information will be included:

- Pension
- Lump sum
- Survivor Pension
- Membership and pay
- Pension Scheme contributions
- Death benefits and nominations

The NHS Pension Scheme information will be based on the latest information we hold for you. This date will be clearly displayed in your statement. If something has changed since this date, for example your grade or working hours, it will be reflected in the statement we produce for you next year.

Why are Annual Benefit Statements being introduced into the NHS?

We want to give a clear picture of the benefits available to you as part of your NHS employment. If you are a member of the NHS Pension Scheme, your statement will help you understand the pension benefits you may receive in retirement.

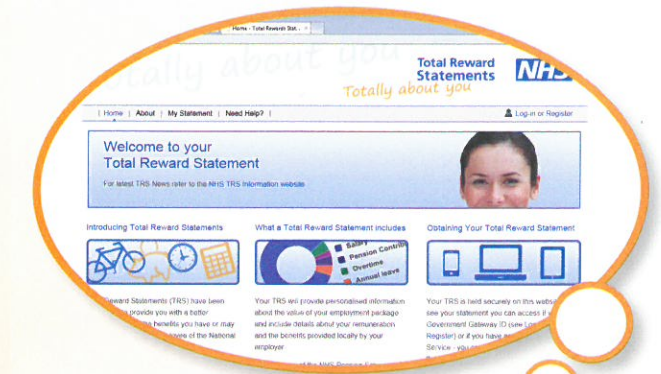
How can I access my statement?

You can access your statement now via the TRS portal. Interactive guides on how to access your statement can be found here: www.esrsupport.co.uk/TotalRewards/index.html

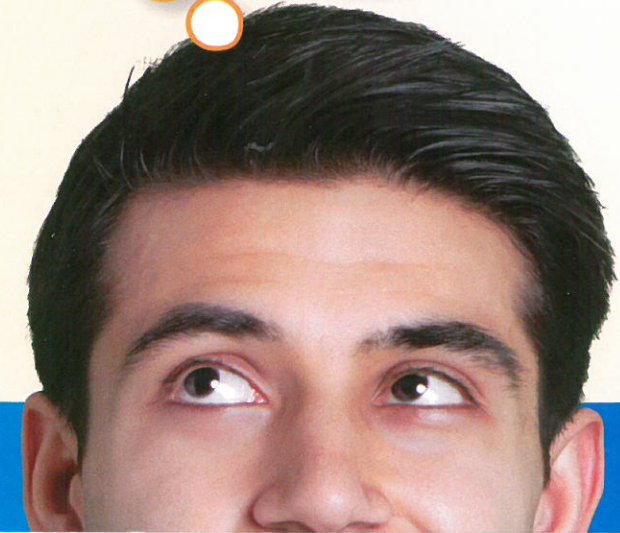
In some cases it may not be possible to provide you with a pension statement. If this is the case you may wish to contact your NHS employer who can make arrangements for a pension statement to be obtained.

Understanding my statement

You can find more information about your statement, how it is structured and the details it provides, in the employee section of the TRS information website at: www.nhsbsa.nhs.uk/TRS



Your Annual Benefit Statement is available to access now via www.totalrewardstatements.nhs.uk



Your feedback

Once you have looked at your statement we are keen to hear your views on how helpful it is. We will include a link to an online survey within the portal – please take some time to complete it and give us your feedback. This will help us to make improvements to ABS for future years.

Your feedback is important to us, please complete the online survey when you access your statement



What support is available to employees?

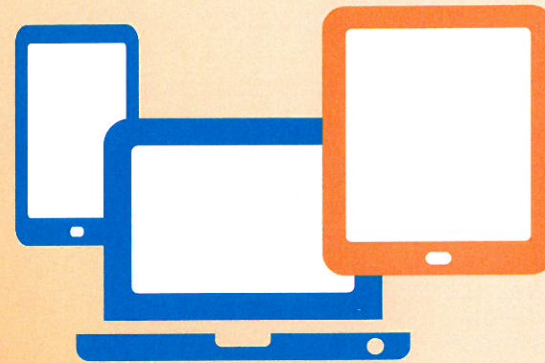
We have asked your employer to contact you and advise where any queries you may have should be directed.

Answers to many of the questions that you may have are available directly through the help pages on the TRS portal.

Please also visit the employees' section of the information website at: www.nhsbsa.nhs.uk/TRS to find:

- all the latest news
- a link to the TRS portal
- more detail about the information contained within the statement.

If after checking these pages you still have questions then you can also contact the dedicated help line on 0300 3301351 or email your query through the 'submit a query' service on the TRS portal help pages.



The pilot for practitioner members of the NHS Pension Scheme

Following the successful pilot of the statements for officer members in 2013, we are piloting ABS for members with practitioner status, or members who have had practitioner status in the past, during 2014. Practitioner members include general practitioners, dental and ophthalmic practitioners (this includes any officer/employee who has ever had practitioner status).

This means that those NHS Pension Scheme members with any practitioner membership will not receive an ABS in 2014.

Following this pilot, it is anticipated that ABS will be rolled out to members with practitioner status in 2015.

Introducing Annual Benefit Statements

